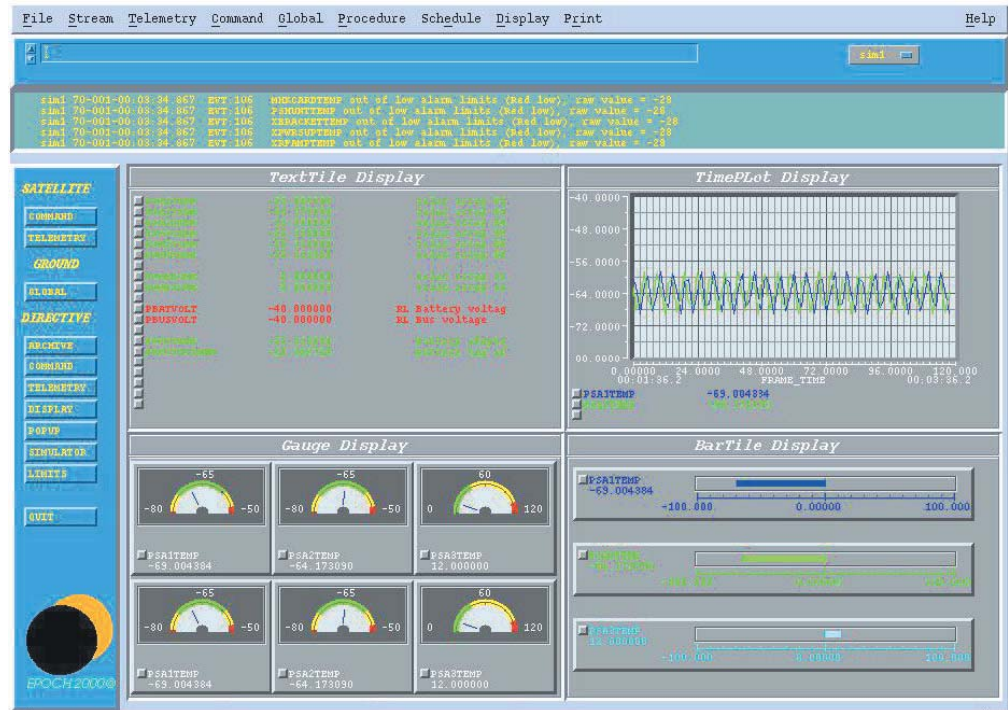


Product Description



EPOCH T&C® (Telemetry and Command) provides complete, off-the-shelf satellite telemetry and command processing. The core of our EPOCH IPS™ product line, EPOCH T&C provides an integrated, end-to-end command and control solution.

EPOCH T&C supports satellites, ground equipment, and ground support equipment with a single software package. Its fully-integrated, database-driven design enables you to perform automated satellite I&T (Integration and Test) and mission operations immediately, without making costly software modifications.

Using EPOCH T&C, satellite controllers can manage a single spacecraft, multiple satellites from different manufacturers, or an entire constellation from a single control center using a single software package.

Features

- Proven for GEO, LEO, and Deep Space Operations and I&T
- Database-driven functionality

Benefits

- Incorporates ISI's experience supporting over 100 satellite missions
- Eliminates risks associated with custom development
- Enables operators to fly a single satellite or a constellation using the same software
- Supports any satellite command and telemetry format from any manufacturer

EPOCH T&C

Satellite Telemetry and Command Processing

EPOCH T&C

Features (cont'd)

- Scalable
- Decentralized
- Open

Benefits (cont'd)

- Supports growth through distributed design, so you can add satellites easily
- Provides high-level status "rollups" from multiple satellites and complex ground segments
- Provides the flexibility to perform any function anywhere on a network
- Offers redundancy by running multiple copies of the software for high reliability
- Runs on any standard UNIX or NT workstation
- Includes an API (Application Programming Interface) for extensions to third-party and custom applications, such as high-level graphics, AI, and planning and scheduling

Applications/Usage

Satellite operators and test engineers use EPOCH T&C to monitor and analyze satellite telemetry and equipment status, send satellite commands, and configure ground equipment. EPOCH provides end-to-end satellite command and control capabilities, including:

- Telemetry processing and analysis (CCSDS and TDM)
- Commanding and command verification with encryption and CCSDS
- Ground equipment control and monitoring
- Alarm/event processing
- Automated operations and anomaly resolution
- Data archiving and playback
- Open API for telemetry, status, events, and commanding
- Automation through EPOCH's STOL procedural language

An Integrated Solution

EPOCH T&C is part of the EPOCH IPS product line, which provides end-to-end capability for satellite operations. EPOCH T&C works with the EPOCH Database® for defining satellite telemetry and command formats, OASYS® (Orbit Analysis System) for orbit analysis and maneuver planning, ABE® (Archive Browser and Extractor) for short and long-term trending and analysis, and LEO-T™ (Low Earth Orbiting-Terminal) for unmanned, automated remote TT&C (Telemetry Tracking and Command) stations. These products work together to provide a proven, integrated, COTS (Commercial-Off-the-Shelf) solution for satellite command and control.



5000 Philadelphia Way • Lanham, Maryland • 20706-4417 • U.S.A.

Telephone 301.731.4233 • Fax 301.731.9606 • Internet: sales@integ.com • Web: <http://www.integ.com>

© 2006 Integral Systems, Inc.